

NANAIMO RHODODENDRON SOCIETY



December 2012



FROM THE PRESIDENT

The end to our great fall weather came as a bit of a shock. Not complaining as our cool damp Spring and long moderate summer has given our plants much new growth and an abundance of buds for next year's display.

The Christmas party and auction is the last club function of the year, and it is a good time to focus on socializing and having fun. 2012 has been a good year for NRS, with a successful show and sale and the well-attended fall conference putting the club's finances in a very good position. January will bring a membership discussion regarding the disbursement of some of the extra funds earned.

I have received only three garden locations (thanks to Paul) for our proposed public garden tour in May. Please volunteer information about potential gardens (yours, neighbours, friends, etc.), so the committee can move forward. It is necessary to have these suggestions before the New Year, as there is a lot of arranging to be done.

Thank you goes out to all the members who have made this Society the success it is, and I'd like to give a special thanks to Reinhold Gorgosilich for his years as a Director and to Anne and Royce Tennant for their generous donation of antique prints, which raised approximately five hundred dollars for the Club.

Come and help us celebrate at the Christmas Auction Party!
Art

EXECUTIVE

President	Art Lightburn	468-7516
Past President	John Deniseger	390-3605
Vice President	Sandra Dorman	390-0136
Secretary	Ann Beamish	758-2574
Treasurer	Burkhard Dressler	758-1738
Directors	Glenda Allard Barr	390-2822
	Debbie Gaboury	758-1204
	Reinhold Gorgosilich	758-6533
	Craig Clarke	390-4090
	Paul Lawry	816-2370
	Susan Lightburn	468-7516

COMMITTEES

Advertising	Susan Lightburn	468-7516
Library	Ann Beamish	758-2574
Newsletter	Kathryn Grant	245-7879
Membership	Debbie Gaboury	758-1204
Program	Glenda Allard Barr	390-2822
Raffle	Ann Davey & Val Harvey	
Social	Sandra Dorman	390-0136
Bargain Table	Reinhold Gorgosilich	758-6533

Nanaimo Rhododendron Society
Box 241, #101-5170 Dunster Road
Nanaimo, BC V9T 6M4
Website: nanaimo.rhodos.ca
email: nanaimo@rhodos.ca



NEXT MEETING

THURSDAY, DECEMBER 13

BEBAN PARK SOCIAL CENTRE

6:30 pm

CHRISTMAS POTLUCK AND AUCTION

NANAIMO RHODODENDRON SOCIETY

TWIGS and STEMs



MILNER GARDENS CHRISTMAS MAGIC

Nov 30 - Dec 2

Dec 7 - 9

Dec 14 - 19

5 pm - 8:30 pm

Admission by donation

*A family oriented festival of lights
and music in the garden. Santa
will be there!
Bring a flashlight.*

GREEN THUMB GARDEN CENTRE CHRISTMAS FARMERS MARKET

Saturday, December 8

10 am - 3 pm

*Join our local farmers and artisans
in celebrating the Holidays!*

NRS Christmas Party and Auction

Once again it is time for the annual Christmas Party and Auction, to be held in our regular meeting room on December 13th starting at 6:30.

Please bring your favorite finger food for all to share. The social committee (Susan) will provide coffee and a non-alcoholic punch. After dinner our Santa will conduct an auction on donated items as a fund raiser for our club, with 10% donated to the SOS. Also, a box will be provided for dry good donations, which will go to Loaves and Fishes.



You are welcome to friends, guests, neighbours. Please bring your own plates, glasses/cups, and eating utensils. Club members can donate items for the auction (plants are a favorite), but all items, homemade or purchased, are welcomed.

NANAIMO RHODODENDRON SOCIETY

Seen In Passing

Some *Rugosa Robusta* blooms lasting through light frost

Lee Scarlet with an exploratory bloom in November

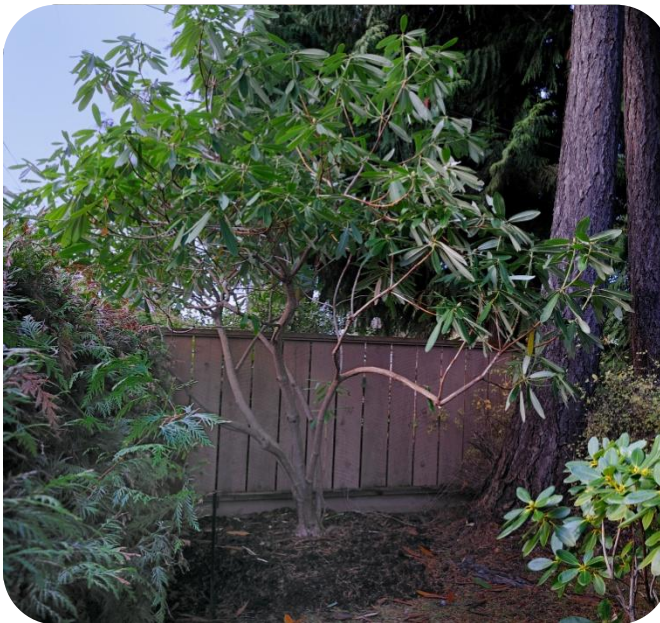
Leaves in the compost reaching 29⁰ C

US Black Friday hype spilling over into Canada

Dull, wet days has Susan checking January flights to Mesa, Arizona



Thanks again to our fantastic Conference Committee! What a job well done!



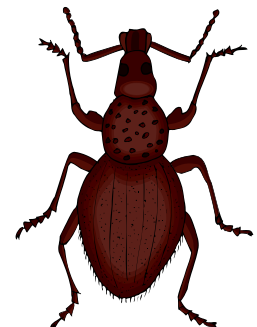
R. diaprepes at its new home

Getting rid of Weevils

This is the formula that Mary Parker uses for ridding herself of weevils.

For weevils use 2/3 cup of liquid Lysol to a green watering can and about every two weeks for a couple of months starting in Feb, douse the leaves and stems and the ground around the plant. Remember they can live under a plant, say 3 plants away and feast on another one. Do them all! Doing it early in the spring eradicates the larva.

Paul Lawry



NANAIMO RHODODENDRON SOCIETY

Art's Favourite: Garlic and Herbed Roast Leg of lamb

1 (5-6 lb or 2.5-3.0 Kg) lamb (bone in)
2 lemons, thinly sliced, rind & all
6 Tbsp (90ml) butter
2 large garlic cloves, minced
4 Tbsp finely minced fresh mint
2 Tbsp finely minced fresh rosemary
2 tsp both coarse salt & cracked black pepper

Bring the lamb to room temperature. Heat the oven to 325⁰ F (160⁰ C). Line a roasting pan with the slices of lemon, just large enough for a 'bed' for the leg of lamb.

In a small bowl combine the butter, garlic, mint, rosemary, salt, and pepper to form a paste. Rub the flavored butter all over the outside of the lamb.

Place the lamb on the bed of lemons. Roast about 2-2^{1/4} hours for rare, 140⁰ F (60⁰ C) on the meat thermometer, a few minutes longer for medium rare, 160⁰ F (70⁰ C) on the meat thermometer. The outside should be crusty and rich golden brown, the inside juicy, succulent, and rosy pink. Baste the lamb every 20 minutes during roasting with collected pan juices.

Remove the lamb from the oven. Allow it to stand 15 – 20 minutes before carving horizontally (with the grain, French style) in thick or thin slices. Serve the slices napped with warm pan juices.



****Leftovers are terrific**

NANAIMO RHODODENDRON SOCIETY

Nanaimo Rhododendron Society Meeting November 8, 2012 – Minutes

Meeting started at 7:35

1. Welcome to the 175th meeting of the NRS!!!

2. President's Address:

- Thank you for the goodies to Glenda Barr, Krystyna Sosulski and Diana English.
- 2015 Conference Report:
 - i. Art and Susan attended planning meeting in Victoria.
 - ii. It will be held in Sydney at the Mary Winspear Centre – the theme will be “Sydney by the Sea”
 - iii. It will be hosted by District 1 – rather than the Victoria Chapter.
- Christmas Party and Auction:
 - i. Donations: letters to local businesses will be sent soon to ask for donations. Art and Ann working on this.
 - ii. A volunteer list is circulating – thanks in advance for your help.
 - iii. Thank you to Joyce and David Mitchell who will be our auctioneers once again!
- Recognition of Dick Beamish's recent “Career Contributions” awards in both Russia and Japan. Dick gave us a summary of what the awards were about. Congratulations Dick!!!

3. Committee Reports:

- Secretary: Ann and Paul both away so June is filling in tonight.
- Sunshine: Sandra has sent a card to Bill Hardy; Mary has just gone into a care facility.
- Treasurer: See report on the table.
- Membership: Time to renew is now – please see Debbie at the break if you haven't renewed your membership yet.
- Plant Sale and Truss Show:
 - i. Doug Blenkarn will be coordinating the truss show again this coming spring.
 - ii. Reinhold and Sandra will be looking after the plant sale. Letters to vendors going out soon.
- Library: Check it out. Ann Beamish and Linda Lawry have done a great job of tidying it up over the summer. Great books in there!
- Program:
 - i. Thank you to Sandra for the card on behalf of the NRS.
 - ii. December program is our annual auction.
 - iii. February is Shannon Berch on soils and the interactions between plants and micro-organisms.
 - iv. January program to be confirmed.

4. Other Report:

- Gerry did a financial report on the conference held in September:
 - i. Planning a conference is a BIG job.
 - ii. We planned for break even number of 150 registrants.
 - iii. We got 246 delegates which gave us a profit of \$10,054.52 of which 10% goes to the ARS.
 - iv. Gerry has all the records if anyone is interested in seeing the details of income and expenses.

NANAIMO RHODODENDRON SOCIETY

- Recommendations from the Conference Committee on how to use some of that money will be submitted to the NRS Executive; it will be discussed at their next meeting.
- 5. Old Business - Executive spending limit:**
 - Art Lightburn moved to have a \$1500.00 limit on single item expenditures by the executive without membership approval added to the bylaws of the NRS. Seconded by John Deniseger and carried by 90%+ of the members present.
- 6. New Business:**
 - The Executive has recommended the purchase of a laptop as many of our speakers require one when doing presentations.
 - Art to look into it and to report back to the club.
- 7. Next meeting – our annual Christmas Auction:**
 - On December 13th at 6:30 rather than the usual 7:30
 - Letters going out to local businesses for donations soon.
 - Donations from members most welcome – let Art know if you have a large plant to donate that needs to be picked up.
 - Please bring a non-perishable item to be donated to the Salvation Army; also 10% of proceeds go to the local food bank.
 - It will be a finger food potluck – sweet or savoury.
 - Bring your own plate and cutlery if you can.

***Program for tonight:

Joan Gibb gave a very informative presentation on Dominion Brook Park in the Saanich Peninsula. It's certainly on our list of places to visit next spring. ☺

Meeting adjourned at 9:15



Companion Plants

R is for Rhododendron
of the Heath Family

Family: Ericaceae

What is the ultimate companion for rhododendrons?
Why, more rhododendrons of course!

This genus of plants is not only one of the largest, but one of the most diverse on the planet. From the tiniest alpine mounds to the noble giants of the Himalayan forests, the colours, forms, and textures are virtually limitless. The mother lode of the wild forms is southwest Asia, but their range spans much of the northern hemisphere and into Australasia, and includes upwards of 900 species – so far! We owe a great debt to those intrepid plant explorers - Fortune, Wilson, Kingdon-Ward, Hooker, Forest, and others, without whose groundwork we could never experience the wealth of selected forms and hybrids (approaching 10,000 now), that we enjoy today.



R 'Teddy Bear' with its thick

rust-brown indumentum

NANAIMO RHODODENDRON SOCIETY

Most of us regard rhodos as wonderful spring-flowering plants that embrace nearly every colour of the rainbow except true blue, but I offer you these plants as indispensable foliage accents for the other 11 months of the year. The diversity of colour, form and texture applies equally as well to the leaves as it does to the blooms, and I truly think this feature is much under-emphasized. The blooms open in a blaze of colour, peak within a week or two, fade and wither, and if you're lucky, fall to the ground.

But the leaves – well ! – they emerge from those tiny buds, unfurling and changing day by day, and instead of withering, they become more glorious, with colours, bracts, indumentum, shine, and fragrance. Pinch off those faded flowers and watch your rhodos 'bloom' all over again.

Close your eyes and use your other senses – fondle the plush, soft, indumented leaves of 'Teddy Bear'; feel the bristles of 'Snow Lady'; smell the spicy resin of the *R. dauricum* hybrids or *R. primuliflorum*; listen to the patter of bright falling leaves of the deciduous azaleas on a fine autumn day. There is so much beauty beyond the blooms, if we only look.

We don't have to be fanatics or connoisseurs to have a wonderful collection, but an understanding of the parent species will guide us to the more interesting hybrids. There are selections available to offer many features – the soft blue leaves of 'Ramapo' and *R. oreotrephes*, the glossy mahogany of 'Lem's Cameo' and *R. williamsianum*; the burgundy red of 'Moser's Maroon' and *R. lutescens*. Indumentum (fuzz on leaves – not a disease!) comes in many forms and colours - from silvery-white to fawn to tan to richest cinnamon. It may be matted or plush velvet, and it may be on the underside only, or both sides, and even on the stems.

The influence of *R. yakushmanum*, *bureavii*, *smirnowii*, *rex* and others can be seen in many fine hybrids. The size of the leaves varies from the tiniest *R. complexum* and *nivale*, to the massive tropical foliage of *R. sinogrande*; and the shapes go from the perky round leaves of *R. orbiculare* and *thomsonii* to the long narrow leaves of *R. makinoi* and *roxianum*.

To prepare lists of the ones with all these features would take a book in itself. I suggest you take a cold rainy evening or two, sit in a comfy chair with a good pot of tea, pick up your best rhodo book, cover up the bright coloured flowers and find the magic of the leaves !

Next spring, in June when nearly all the flowers are finished, cruise the plant centers and public gardens and start your shopping all over again. You won't be sorry.

Happy Planting!

Colleen Forster



R. orbiculare with its
skillet-shaped leaves



R. oreotrephes with its
elegant blue-green leaves